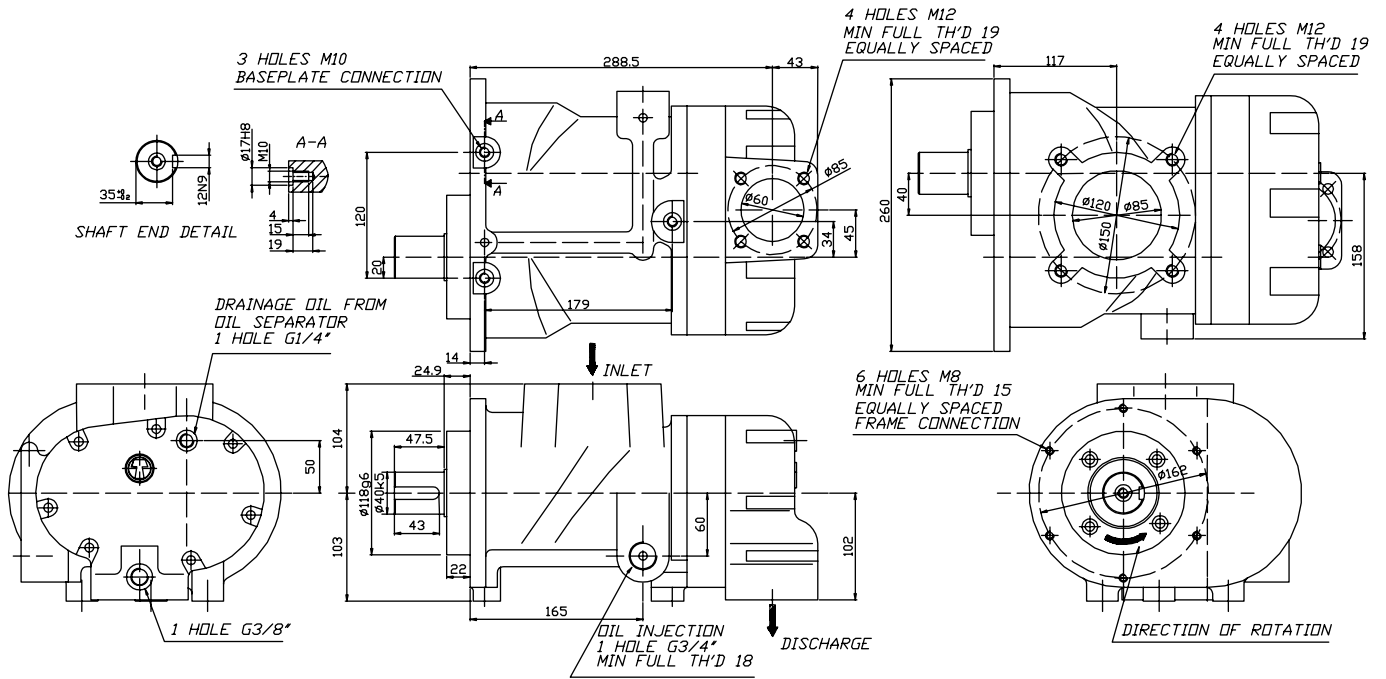




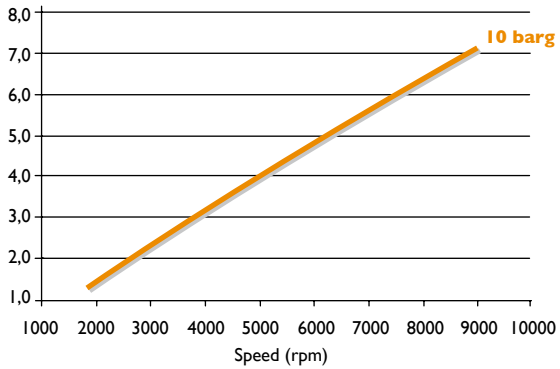
# SCA10D-R

Outside view drawing

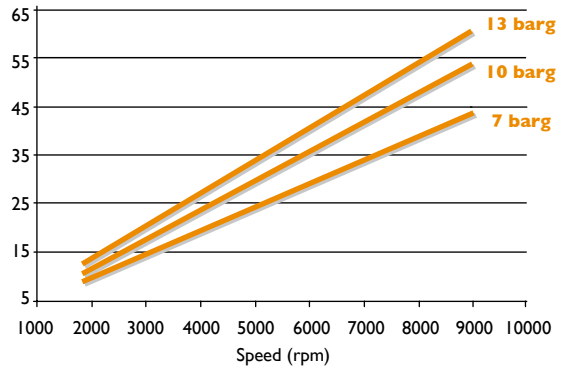


## Data Tables

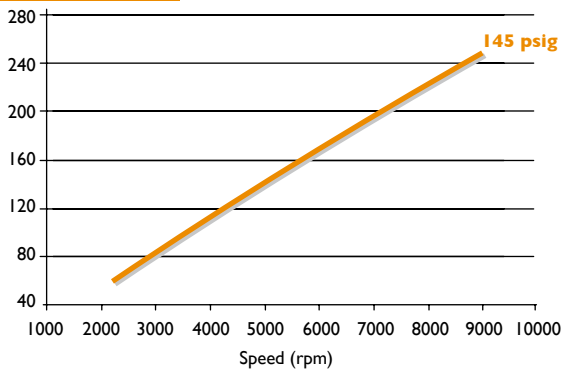
**Air Capacity (mc/min)**



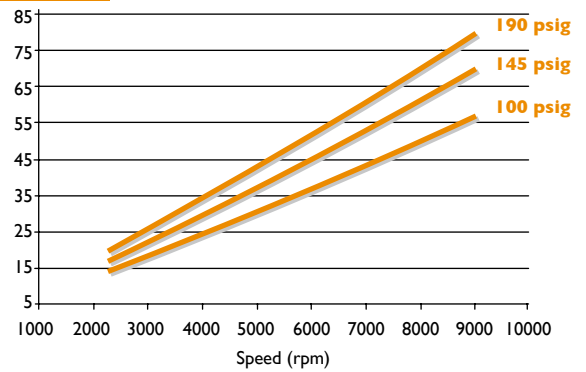
**Power (kW)**



**Air Capacity (cfm)**



**Power (HP)**



Drive: Male  
Lobe combination: 5/6  
Male rotor size: 108,6 mm

Female rotor size: 90,4 mm  
L/D: 1,56

Working pressure: min 3 barg/40 psig - max 15 barg/220 psig  
Weight: 45 kg - 99 lbs